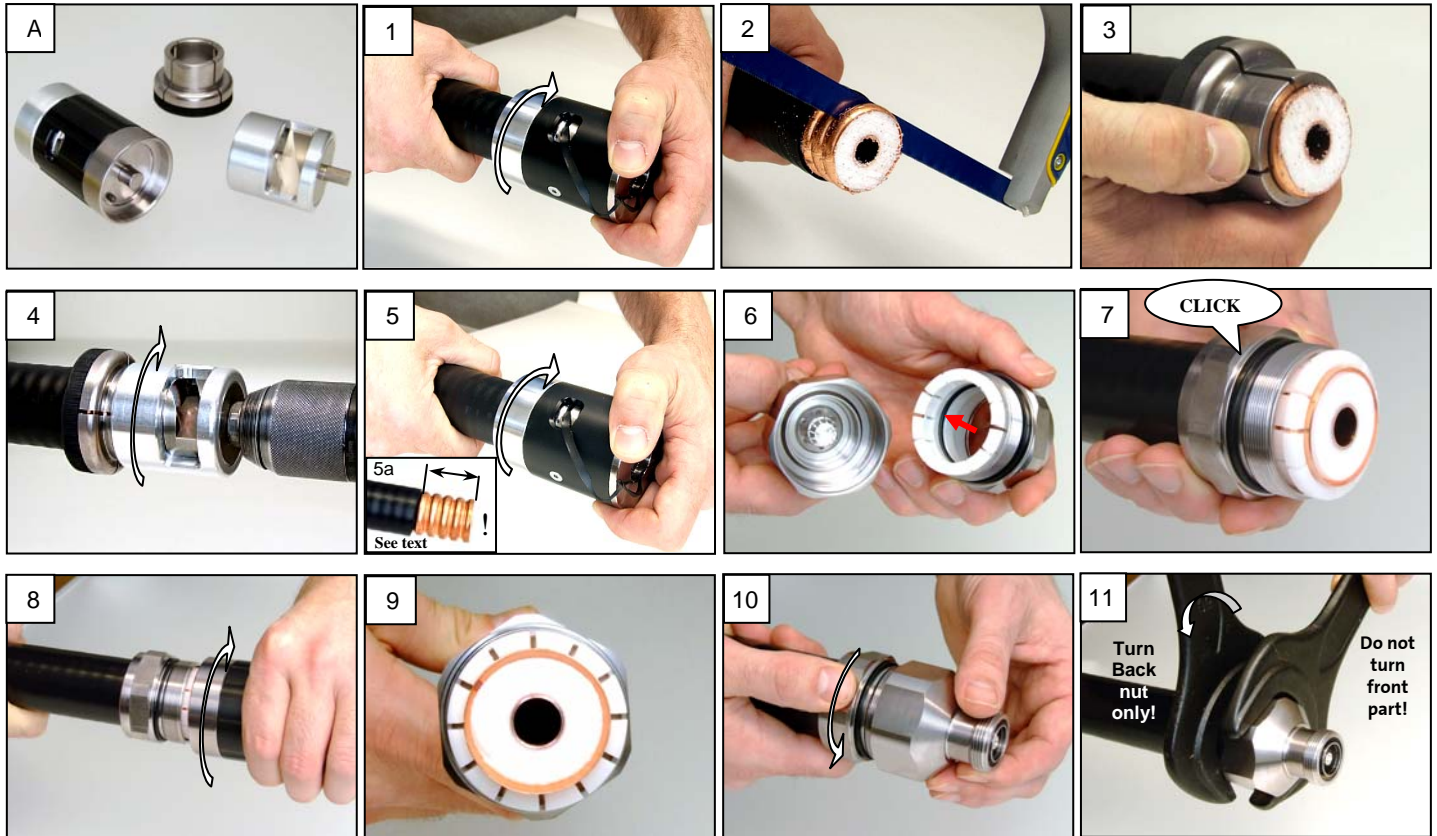


# Corning

## Cabelcon Installation Instructions for 1-1/4" & 1-5/8" DoubleClick™

This instruction demonstrates how to install the 1-1/4" & 1-5/8" DoubleClick™ connectors using the DoubleClick™ tools.



Corning Cabelcon recommends using personal protection such as safety glasses and gloves during the installation!

A. Cabelcon DoubleClick™ installation tool kit. A separate maintenance instruction is following the tool when supplied.

This is how to install the DoubleClick™ connector:

1. Strip the jacket using the jacket tool. Press and turn clockwise until the mechanical stop is reached.
2. Cut the cable in the bottom of the corrugation using a hacksaw.
3. Place the tool guide as shown.
4. Strip the cable. Press against the cable and turn slowly in clockwise direction (app. 300 rpm) until the physical stop is reached.
5. Remove tool guide and repeat the jacket stripping operation. Press and turn clockwise until mechanical stop. Check the stripping dimensions. For 1-1/4" cables it must be 32 mm and for 1-5/8" cables it must be 38 mm.
6. Connector front part and back nut. Remark the black security O-ring placed in the back nut).
7. Push the back nut on cable until the ferrule is placed in the first corrugation as shown. **Attention:** Make sure that the O-ring inside (can be seen in picture no. 6) slides over the outer conductor without getting pushed out.
8. Use the flaring tool (opposite end of the jacket stripping tool). Press against the cable and rotate several times to slightly flare the outer conductor (can be rotated in both directions).
9. This is how it should look after the flaring operation. The interface must be clean and free of any particles, dust or dielectric material. If necessary clean it using a brush or another proper tool.
10. Push on the connector body and tighten the back nut by hand as far as possible. Do not turn the front part of the connector!
11. Keep the connector body in a fixed position and tighten the back nut of the connector to mechanical stop (no visible gap between body and back nut). This corresponds approximately to a torque of 50 Nm for 1-1/4" and 65 Nm for 1-5/8" cables) by the use of two spanners.

### Manual installation without the DoubleClick™ tool (not recommended\*):

The cable must be cut on top of a curve!! Make sure to keep the exact dimensions (pict. 5a). For 1-1/4" cables it must be 32 mm and for 1-5/8" cables it must be 38 mm. Make sure to deburr the outer conductor and the inside of the inner conductor and remove any remaining foam. After installation of the back nut: Chamfer the outer conductor using a proper tool and make sure that the surface is clean (any remaining foam must be removed). See picture. 9 for the final result. Install in accordance to the instructions above.

\* Corning Cabelcon disclaims warranty if the product is installed without following our instructions and using our installation tools.

Rev. 020310

**CABELCON**  
connectors